



The Term & Weekly Program for the Cub Scout Pack

A Tool for the Cub Scout Leaders

Part Two

The following templates have been developed to assist the Troop Council & Leaders to plan the weekly program.

Use in conjunction with the document. 'Understanding the Areas of Personal Growth & The Scout Method'.

MEDIUM & SHORT TERM PLANNING

PLANNING FOR THE TERM & EACH WEEK

The Cub Scout leaders have the following information to plan for the term –

1. Year Planner
2. Review notes on the success of last terms program including the parts of the program that haven't been finished

STEP 1

Look at the long-term plan developed for the term.

- Adjust the program due to
 - What wasn't finished last term
 - Any new events or activities that might now be available
 - Changes to planned activities due to other circumstances
 - Any changes to Pack activities and training

STEP 2

- Finalise any changes to the long term program for the term
- Finish the planning sheet by completing the columns on the right
 - When and where will the activity happen?
 - Who will be responsible for running the activity?
 - What equipment and other planning is required?

STEP 3

It is now time to develop the weekly program.

- Most of the information required for the weekly program is listed on the long term program.
- Responsibilities can now be delegated to different leaders and helpers.
- Ensure sixers have some responsibilities

DON'T FORGET

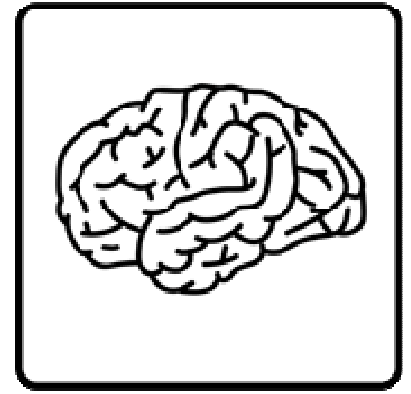
- The Pack does not have to meet as a pack, at the scout hall every week. Meetings can occur at a variety of locations and times in the local community.
- Good planning and regular review breed's success.
- Learning and doing should always occur through practical activities.
- Ensure everyone involved knows what is expected of him or her well in advance.
- Distribute a broad copy of the program to parents at the beginning of the term.



Spiritual



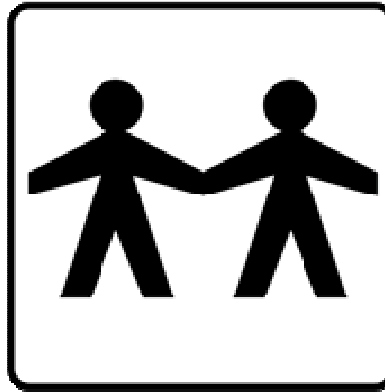
Physical



Intellectual



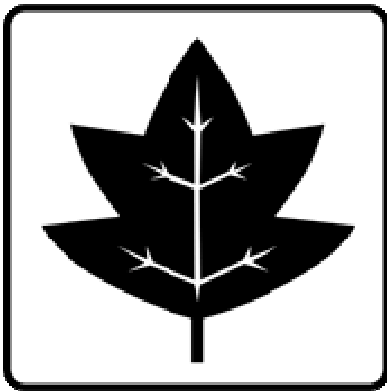
Emotional



Social



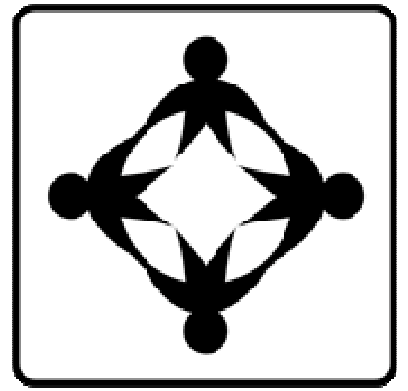
Character



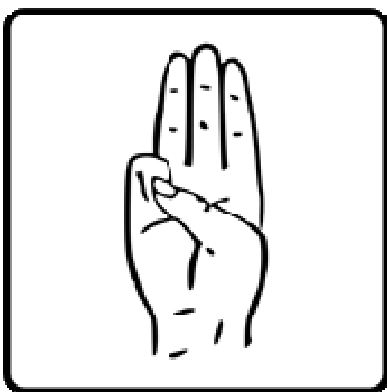
Nature



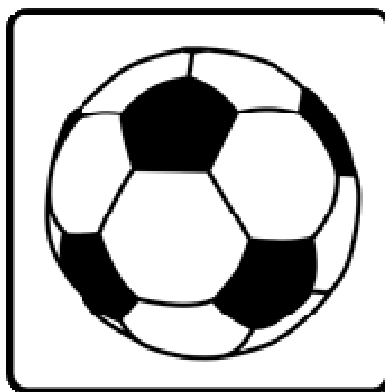
Service



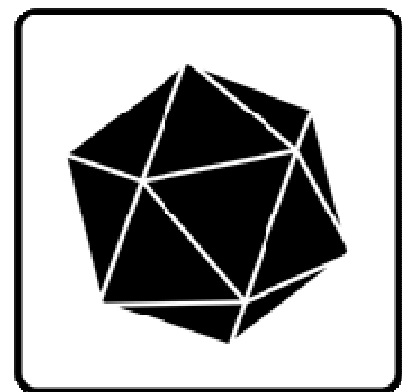
Team System



**Promise
& Law**



**Games &
Activities**



**Symbolic
Framework**



CUB SCOUT PACK WEEKLY PLANNER

_____ PACK

DATE: _____
SCHOOL TERM: _____

THEME/TOPIC: _____

PARTICIPATION SCHEME FOCUS: _____

TIME	ACTIVITY	LEADER	EQUIPMENT	PARTICIPATION SCHEME FOCUS:		RESOURCE LINK
				AoPG	METHOD	
	Opening Parade:					

